

SHEET 1 OF 2
MORRISON HOMES
SOUTH SECTION
IN GOVERNMENT LOTS 4 & 5, SECTION 5, T. 44 S., R. 43 E.
PALM BEACH COUNTY, FLORIDA

SCALE: 1" = 60' OCTOBER 1951
H.C. FUGATE, SURVEYOR

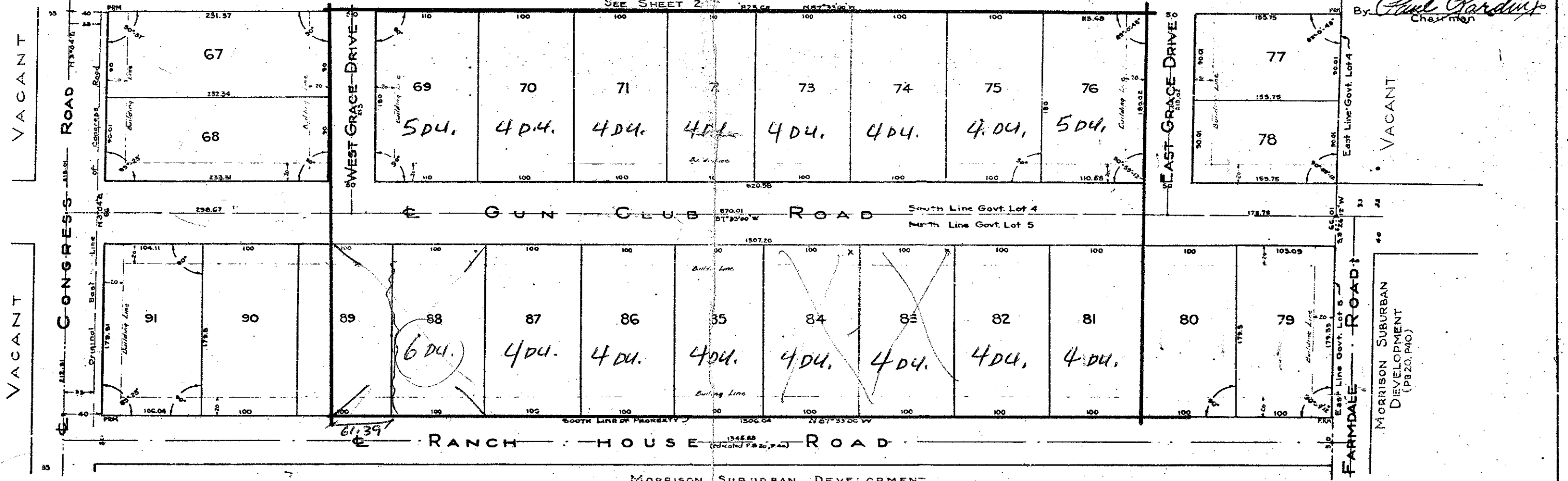
189

STATE OF FLORIDA
COUNTY OF PALM BEACH
This Plat was filed for record at 4:06 P.M.
this 26th day of December
1951 and duly recorded in Plat Book No.
23 on pages 189-190
J. ALLEN ARNETTE, Clerk Circuit Court
at West Palm Beach, D. C.

Sec. 31 32
6 5

NOTE: Bearings are shown on Datum of Original Survey of 1941.

MORRISON HOMES - (NORTH SECTION)



Approved: 26 Dec. AD 1951
Board of County Commissioners
By: *John Boyd*
County Engineer
By: *Paul Gardiner*
Chairman

STATE OF FLORIDA:
COUNTY OF PALM BEACH:
KNOW ALL MEN BY THESE PRESENTS, that THE UNITED STATES OF AMERICA PUBLIC HOUSING ADMINISTRATION...
Beginning at a point being the northwest corner of Section 5, Township 44 South, Range 43 East, running thence South 3 degrees, 4 minutes, 0 seconds West, a distance of 100 feet to a point; thence South 87 degrees, 22 minutes, 10 seconds East, a distance of 109.95 feet to a point in the southerly side of the West Palm Beach Canal, being the point or place of beginning of this description; running thence along the West Palm Beach Canal South 87 degrees, 22 minutes, 10 seconds East, a distance of 567.12 feet to a point; thence continuing along West Palm Beach Canal a distance of 682.96 feet to a point being the northeast corner of the premises hereinafter described, said point being North 3 degrees, 26 minutes, 12 seconds East a distance of 28.9 feet from a concrete monument thence South 3 degrees, 26 minutes, 12 seconds West a distance of 1363.55 feet to a concrete monument; thence North 87 degrees, 33 minutes, 0 seconds West, a distance of 1506.04 feet to a point in the easterly side of the right-of-way of a county road 80 feet wide, said point being distant South 87 degrees, 33 minutes, 0 seconds East 40 feet from a concrete monument set in the center line of right-of-way of said county road; thence North 3 degrees, 4 minutes East a distance of 774.24 feet; thence North 13 degrees, 5 minutes, 20 seconds East a distance of 401.29 feet; thence North 3 degrees, 4 minutes East a distance of 284.94 feet, more or less, to the point or place of beginning, containing 45 acres, more or less, subject to the county road extending along the westerly side of the above described property.

no reservation of such materials had been made; except that the such use results in the extraction of any such material from the land in quantities which may not be transferred or delivered without a license under the Atomic Energy Act of 1946, as it now exists or may hereinafter be amended, such material shall be the property of the United States Atomic Energy Commission, and the Commission may require delivery of such material to it by any possessor thereof after such material has been separated from the ores in which it was contained. If the Commission requires the delivery of such material to it, it shall pay to the person mining or extracting the same, or to such other person as the Commission determines to be entitled thereto, such sums, including profits, as the Commission deems fair and reasonable for the discovery, mining, development, production, extraction and other services performed with respect to such material prior to such delivery, but such payment shall not include any amount on account of the value of such material before removal from its place of deposit in nature. If the Commission does not require delivery of such material to it, the reservation hereby made shall be of no further force or effect.
Easements 3 feet in width each side of the centerlines of watermains and liquid fuel lines as shown on sheet 2, are reserved with the right of access for the maintenance and repair of same and appurtenances.

IN WITNESS WHEREOF, the UNITED STATES OF AMERICA acting by and through the undersigned has caused these presents to be executed at Atlanta, Georgia, this 26th day of December, A.D. 1951.

UNITED STATES OF AMERICA
Public Housing Administration,
Housing and Home Finance Agency.
By: *M.B. Satterfield*
M.B. Satterfield, Director
Atlanta Field Office

ur0025.igr
MORRISON HOMES PB 23 PG 189/190

STATE OF GEORGIA:
COUNTY OF FULTON:
I, *Pauline Crawford*, Notary Public,
My Commission Expires January 12, 1955

STATE OF FLORIDA:
COUNTY OF PALM BEACH:
I HEREBY CERTIFY, that the plats shown as Morrison Homes, South Section, Sheet 1, shown hereon and Morrison Homes, North Section, Sheet 2, shown on the accompanying sheet are true and correct representations of a survey made under my direction and that said survey is accurate to the best of my knowledge and belief, and that Permanent Reference Monuments have been set as required by law.
By: *H.C. Fugate*
Registered Land Surveyor
Florida Certificate No 132

ON THIS DAY, personally appeared before me, H.C. Fugate, Surveyor, and he acknowledged that he executed the foregoing certificate. WITNESS my hand and official seal this 26th day of December, AD 1951.

Shirley R. Conley
Notary Public

My Commission Expires June 27, 1952.

PUBLIC HOUSING ADMINISTRATION
FIELD OFFICE FOR MANAGEMENT AND DISPOSITION
617 IN BUILDING ATLANTA 3, GEORGIA
SHEET 1 OF 2
FLA. 8041
MORRISON HOMES
SOUTH SECTION
IN Gov. LOTS 4 & 5, SEC 5, T. 44 S., R. 43 E.
PALM BEACH COUNTY, FLORIDA
SCALE: 1" = 60' OCTOBER 1951
H.C. FUGATE
REGISTERED ENGINEER & SURVEYOR
WEST PALM BEACH, FLORIDA